

President's Message

Hello neighbors!

As 2016 quickly draws to an end, and as we face some uncertainty as we usher in our newly elected president, what is still true for me is my sense of optimism for our community.

In the past year, neighbors have banded together to improve the Slopes. More than a year in the making, Knoxville Incline Park along Brosville Street was designated a greenway, ensuring this land is protected for recreational use and will not be developed—keeping a bit of green space for everyone to enjoy.

The Mosaic Step Art project installed in October on the Oakley Way steps brought together almost 100 people from the Slopes, Flats and residents of other neighborhoods who wanted to participate in this whimsical public art project. If you haven't already, check it out!

Speaking of the steps, this fall's StepTrek was a huge fundraising success. Combining StepTrek fundraising, grant awards and a partnership with City of Pittsburgh to make repairs to the steps, we've made one of the most unique assets of the Slopes safer AND more beautiful. Let's keep it up!

As the incoming president of the board of directors of the South Side Slopes Neighborhood Association, I see so many good people making great things happen here, and am proud to be a member of this unique part of the City. I hope my time working with the board and you, my neighbors, includes moving our community forward—to make it safer, more beautiful and welcoming to all.

Wishing you a Happy New Year!



Kristin Raup

President

South Side Slopes Neighborhood Association



IN THIS ISSUE

President's Message	[1]
Pgh BuildingEye	[2]
BigBurgh.com	[2]
Snow Angels	[3]
New Board Members	[4-5]
StepTrek Recap & Photos	[6]
Holiday Party Details	[7]
Calendar	[8]

Holiday Party

December 13 @ 7 p.m.

St. Paul's Monastery Retreat Center

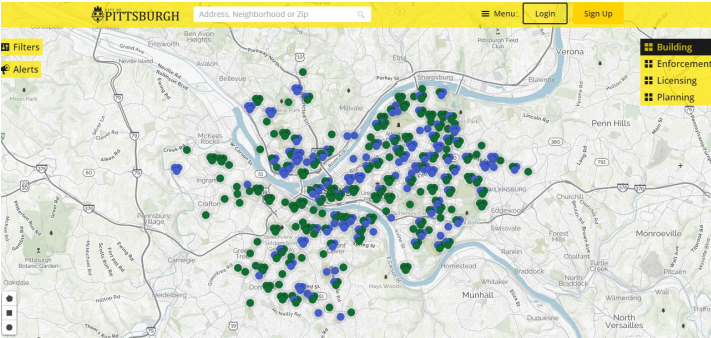
See p. 2 for more info

"Neighbors working together to make the Slopes a more livable, beautiful, and safe community."

SOUTH SIDE SLOPES NEIGHBORHOOD ASSOCIATION

www.southsideslopes.org

BuildingEye: A Useful Online Tool



Visit: <https://pittsburghpa.buildingeye.com/building>

The City of Pittsburgh has implemented a new online tool that allows anyone to access building and planning data in an easy-to-understand and searchable map. To see ongoing cases, you may use the filters on the map and search to find projects by property location, reference number or type of project. The map displays detailed, specific case information. You may also setup to receive an alert to get notification of new cases opened inside your

designated alert area.

Visit the City of Pittsburgh's website, or go to: <https://pittsburghpa.buildingeye.com/building>.

New Website Helps People in Need

A new mobile-friendly website, **BigBurgh.com**, was created to aid homeless people and others in need of services connect to an agency that can help. The site makes it easy for users with a smartphone to find an agency such as a shelter, food pantry or medical services that help someone in crisis.

Visit **BigBurgh.com** and start using this useful new app. It's a handy tool that helps!

Slopes Residents Were a Welcome Site at the Dirty Dozen Race

Each year on the Saturday after Thanksgiving, the Dirty Dozen Bike Race winds its way around Pittsburgh, hitting the steepest hills in the City. When they get to the South Side, the course includes two killer hills, one going up Welsh Way, and the other which starts on Josephine Street, riders turn on to Barry Street, up Holt Street (the wrong way), around the bend, then another turn left to climb the brutal incline up Eleanor Street. This year, as in year's past, at the top of the hill on to Cobden Street, they were welcomed by enthusiastic Slopes residents serving coffee and hot chocolate and good cheer!



Climbing up the steep and grueling Eleanor St. hill.

Congrats to all the bikers—such an impressive and friendly bunch!

Get an Angel, Be an Angel

What is Pittsburgh Snow Angels?

Snow covered sidewalks can be dangerous everyone. Pittsburgh Snow Angels is a program that helps minimize the hardships of winter by pairing volunteers with elderly or disabled residents to assist with snow removal.

Along with building stronger community relationships and relieving some of the stress that comes from a snow storm, Snow Angels makes our sidewalks safer for those who continue to serve despite the winter weather – like postal service workers, firemen, and police officers.

To be matched with a Pittsburgh Snow Angel and receive assistance, residents must have a physical disability or be age 60 or older, be a City of Pittsburgh resident, and not have alternative snow removal resources.



REQUEST AN ANGEL

Call: 412-475-2459

BE AN ANGEL

Visit: <http://pittsburghpa.gov/mayor/snowangels/index.html>





PITTSBURGH BINDING

Have you ever wondered what went on in that big, red brick building at the corner of Mission and Barry Sts.?

Well, since 1993, Pittsburgh Binding has provided print binding and finishing services to printers, advertising agencies and design firms in the region. They offer services such as saddle stitching and die cutting to Wire-O® binding, plastic coil binding, calendar tinning services and more.

Pittsburgh Binding has produced high-quality finishing for print projects for local sports teams like the Pittsburgh Penguins to corporate clients such as PPG.

Support this Slopes business!

PITTSBURGH BINDING

2538 Mission Street
Pittsburgh, PA 15203
412.481.8108

Pittsburghbinding.com

Do you have or know of a Slopes-based business that we could feature in a future newsletter? Email us:

newsletter@southsideslopes.org

New Faces, New Ideas

Three new SSSNA board of directors elected, as we say thank you to our departing members

In October, the South Side Slopes Neighborhood Association held its board of directors elections, appointing three new members, taking the place of three members who have moved and/or stepped down from their posts.

The SSSNA extends its deepest appreciation to our departing board members. We thank long-time member Sara Shea for her years of energetic service, playing a big role in the inception of Bandi Schaum Community Garden along with many other projects for which she contributed her talents; Pavel Yakolev for his six years of serving as treasurer, always ensuring the responsible stewardship of the SSSNA's finances; and Laura Officer who, during her short one-year term on the board, conducted a highly informative neighborhood survey that will help shape future initiatives in the neighborhood. Laura was also a passionate member of the Friends of South Side Park committee who work to improve the park for all residents.

Get to Know New Board Members



Donna Tarkett

Donna Tarkett

New SSSNA board member, Donna Tarkett, has been a resident of the South Side Slopes since 2000. She fell in love with her home and neighborhood right away, and continues to enjoy her little urban homestead. She is an avid gardener, artist, musician, train lover and also enjoys bonfires and her backyard chickens! She's loved raising and homeschooling her children in South Side and has no plans on leaving any time soon!

Donna has been a member of the Steering Committee for Bandi Schaum Community Garden since its inception. She has worked at a drug and alcohol treatment center in East Liberty for almost three years, and also attends Carlow University, working on a degree in Psychology.

Donna is very excited to be involved on the Board of the SSSNA and looks forward to contributing to the South Side in that capacity.

Blake McLaren

Originally from West Mifflin, Blake McLaren moved back to Pittsburgh in 2013 after a stint in the Pacific Northwest. He studied business and marketing at the University of Pittsburgh and proceeded to work in high-growth sales management for ten years, with a focus on team building and leadership development. Passionate about participating in Pittsburgh's current transformation, Blake recently founded a South Side-based company that provides affordable, high-quality housing to Hilltop residents.

Shortly after moving back to Pittsburgh, Blake and his wife, Cheryl, began gardening at Bandi Schaum Community Garden to build upon their limited gardening space at home, which for a few years included a failed backyard chicken experiment. Interested in supporting the growth of the garden and contributing to the efforts in South Side Park, Blake began attending SSSNA meetings and activities. Blake is excited to now be joining the board to contribute to SSSNA's already impressive record of fostering an engaged and thriving South Side Slopes community.

In his free time, Blake enjoys exploring the mountains of Appalachia and riding his mountain bike in and around Pittsburgh. He has a soft spot for funny cat videos and tacos.



Blake and Cheryl McLaren

Liz Heidenreich

A newer resident of the South Side Slopes, Liz Heidenreich is already entrenched in the work of helping others, so her appointment to the SSSNA board seems like a great fit. Liz already works to welcome, support and serve refugee and immigrant families of Pittsburgh as the Advocacy and Programs Coordinator at the Prospect Park Family Center, a program of South Hills Interfaith Movement (SHIM). Her reputation for building relationships between refugees and service providers brought her onto the Advisory Council of Mayor William Peduto's Welcoming Pittsburgh initiative in 2015.

Elizabeth received Bachelor's degrees in German and International Politics at the Pennsylvania State University and a Master's of International Development at the University of Pittsburgh's Graduate School of Public and International Affairs (GSPIA). In between degrees, she also spent a year studying abroad in Germany and over two years volunteering with the Ministry of Education in Thailand as a U.S. Peace Corps Volunteer.



Liz Heidenreich

Since moving to the Slopes, Elizabeth has kept herself busy by founding South Side Smart Streets, a community group that advocates for pedestrian and bicycle safety in the South Side. She is always trying to get to better get to know the neighborhood, its residents, and its businesses. This year she has also accepted board positions on both the South Side Slopes Neighborhood Association and the South Side Chamber of Commerce. She has also been a long time Big Sister for Big Brothers Big Sisters of Greater Pittsburgh.

StepTrek Recap

The Oct. 1 StepTrek event turned out to be an almost perfect Saturday for trekkers! It was not too hot, not too cold (and no hail as in year's past!). Everyone that came out enjoyed the day. Below are a few of the great moments captured at this year's event. Don't forget, mark your calendars for next year's StepTrek, happening on Oct. 7, 2017.



Above and below: Trekkers of all ages having fun!



StepTrek on the newly installed mosaic steps on Oakley Way steps on Josephine & 27th Streets.



On the left:
Mosaic step artist,
Laura Jean
McLaughlin



Above: The Steppin' Stanzas provided entertainment along the route.

Below: Laura Jean McLaughlin talks to StepTrek goers about the mosaic steps.



The South Side Slopes Neighborhood Association (SSSNA)
invites you to join us for a

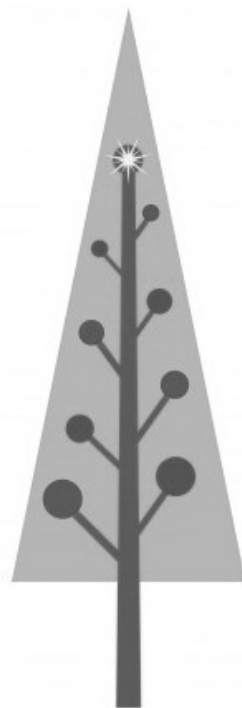
Holiday Party

TUESDAY, DECEMBER 13

7 P.M. @ St. Paul Monastery

Entire community is welcome!

Please bring an appetizer or dessert. Entrée and side dishes will be provided.
(St. Paul 148 Monastery Drive, Pittsburgh, PA 15203)



STORE XPRESS.com
Indoor Climate Controlled Self-Storage
Proud to support the
South Side Slopes Neighborhood Association

*Special Offer for Residents of
South Side Slopes*
2nd MONTH FREE RENT

*Must present coupon at lease signing. May not be used with any other offer.

**FREE
TRUCK AND
GAS FOR
MOVE IN!**



412-431-5625



South Side Slopes
Neighborhood Association



APPROVED

Keep Trash Out of Sight, Stored in Cans with Lids - SouthSideSlopes.org

Support the SSSNA

Please help to support the SSSNA and its mission of "neighbors working together to make the Slopes a more livable, beautiful, and safe community."

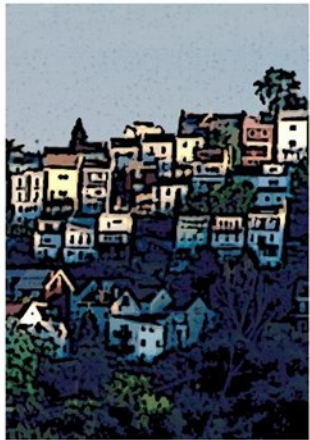
Donations are accepted through our website: southsideslopes.org
(click on the PayPal link).

To donate with a check, please make it out to
SSSNA, and mail it to: SSSNA, P.O. Box 4248,
Pittsburgh, PA 15203.

Access our website with your smartphone using
the QR code to the right.



South Side Slopes Neighborhood Association
P.O. Box 4248
Pittsburgh, PA 15203



**SOUTH SIDE
SLOPES**
NEIGHBORHOOD
ASSOCIATION

NON-PROFIT ORGANIZATION
US POSTAGE
PAID
PITTSBURGH PA
PERMIT NO 603

«AddressBlock»

CALENDAR OF EVENTS—2016-17

Tuesday, December 13 — Holiday Party (St. Paul of the Cross Monastery, 7pm]
Tuesday, January 10, 2017 — (Location TBD)

To stay informed on these and all upcoming events, please sign up to receive our eblast by visiting:
www.southsideslopes.org/contact

Interested in Advertising?

Each edition of the *South Side Slopes Quarterly* reaches more than 1,800 residents and businesses. Contact us at:
newsletter@southsideslopes.org.



facebook.com/southsideslopes



twitter.com/southsideslopes